

Does your email reader truncate long messages?

[View this email in your browser](#)



Happy New Year at AFE!

Table of Contents

- [This month at AFE](#)
- [Enrichment Classes](#)
- [Around Town](#)
- [Homeschool Highlights](#)
- [AFE Community News](#)
- [AFE Community Classes](#)
- [AFE Parent Club](#)
- [Newsletter submissions](#)

Quick Dates for January:

Date	Event	Time
1/5	Classes resume	
1/8	Town Hall Meeting and Kids Night Out [info]	6:30

1/9	Follywood submissions due	
1/22	Creative writing celebration [info]	6:30
1/24-31	Theater performances [info]	
28	Jandy Nelson at Bookshop SC	

Communication at AFE:

- [Staff directory with office hours](#)
- [Calendar](#)
- [Class information](#)
- [AFE Online Bulletin Board](#)

This month at AFE Sweeten up your Calendar with Follywood

It's coming up!! Follywood this year is on Valentine's day, **Saturday, February 14.**

AFE's annual student film festival is coming up in only a couple of months. **All submissions are due by January 9th**, so be sure to get a camera and some friends together over winter break. Help with organization, script writing, presenting, and decorating would also be greatly appreciated. If you are interested or would like more information feel free to talk to Oliver in person or email afefollywood2015@gmail.com.

Town Hall Meeting and

AFE Community News School Photos

If you'd like to order more school photos taken by Nicola Percy, you can now [order online here](#).

Light paintings

Art Night was a great success. [To view students' light paintings, click here.](#) [To view other Art Night photos, click here.](#)



Basketball

I would like to invite any 6-12 grade AFE students to come join the Basketball Team! You can choose to

Kids Night Out

Jan 8th 6:30 - 8:30pm

Our next Town Hall meeting will include childcare! Parents, attend the Town Hall meeting while, weather permitting, your kids enjoy supervised outside play— yes, in the dark! (If the weather doesn't co-operate some indoor fun will be provided instead.)

Town Hall meetings are how we approve funds for activities and classes. Proposal forms for classes were submitted last month. At the town hall meeting we will choose, as a community, what activities and materials to fund for the spring. Tea and cookies provided.

Parent Club

Don't forget to visit [the Parent Club box](#) at the bottom of this page. Parent Club supports theater, music, clay studio, sports, and more!

[\[Return to Table of Contents\]](#)

New High School Classes for the Spring Semester

Topics in Ecology

What is ecology, anyway?

The scientific study of the interactions between organisms and the environment.

A life science course for high school students

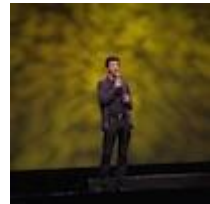
Up to 5 credits

Thursdays 1-3 pm, beginning February

play in games and practice, or just practice. We want you to be safe, have fun and enjoy learning basketball and teamwork skills. Practice at PCS Wednesdays, 1:30 to 3 starting January 14th for 10 weeks, plus another weekly practice at AFE. Contact Mark Thomas, 566-0631

Class Dismissed

The entire Santa Cruz homeschooling community came together at the Rio Theater to view the new homeschooling documentary, *Class Dismissed*, and celebrate homeschooling. Filmmaker Jeremy Stewart was on hand to answer questions afterwards. And we all got the opportunity to sing Happy Birthday to one of our long-serving local homeschooling advocates, AFE teacher Jasmin Gerer. [Click here for more photos.](#)



BSSC Library

The BSSC library offers great free resources for our students. Of particular interest:

- StarWalk Kids Media - button on the main page. If you would like Login Information for your students for home access, [e-mail Jolene](#).
- Hour of Code

5th

Note: Field trips may run longer than scheduled class time.

Teacher: Joanne Brown

Have you ever wondered what's going on in the redwood canopy? Did you know that there's a whole other world happening up there? Do you know why wolves are so important in Yellowstone and how the different wolf packs get along (or don't!)? Do you think of California as a diversity hotspot? What's the bottly's key to success? If you were a mountain lion would you rather run across a highway or use an underpass made just for you? How did the condors return to Big Sur? These are just a few of the topics that we'll explore together in this class. There will be several fascinating guest speakers. We'll be going on at least three field trips to get a first hand look at local ecosystem ecology. There will be weekly homework assignments, two projects, and a final exam.

The sign up sheet for this class is posted in the Resource Center.

Global Environmental Challenges 10th-12th Grade

Tentatively Monday & Wednesdays
10:30-11:45

Taught by AFE Alum Barak Wouk

How might climate change affect you? What could it mean for society? How might society respond to this kind of challenge? In this class we

- [BSSC Library Facebook Page](#) - regular library fun, new resources, community opportunities and announcements!

[Visit the website!](#)

[\[Return to Table of Contents\]](#)

AFE Community Classes

Theater - Performances this month!

Please join us for our all-school production of A Night in the Wax Museum this month. Over 55 actors from grades K-12 will transform our multipurpose room into a museum where characters from history come alive. Several AFE musicians will join this production as well. Buy your ticket in the Resource Center now, so you can be sure not to miss this hilarious production from our theatrical community.

Tickets cost \$5 students/\$8 adults for all tickets purchased before January 23rd. All tickets at the door will cost \$10/person.

Performances: **January 24th @ 7 pm**, **January 25th @ 2pm**, and **January 31st @ 7 pm!!!**

Guitar Group

(Previously called "Acoustic Jam.")
At the request of many families, AFE

will explore these types of questions using the latest science.

Barak studied Sustainable Development at Columbia University and Ecological Design at Prescott College. Contact him at barakwouk@gmail.com, if you are interested in signing up or have any questions.

Dramatic Literature/ Shakespeare Class & Ashland Trip

In preparation for a four day trip to the Oregon Shakespeare Festival in May, high schoolers will be studying the following plays this year:

Shakespeare's comedy *Much Ado About Nothing* and an audience favorite *Pericles*, a contemporary Chinese drama *Secret Love in Peach Blossom Land* directed by the playwright Stan Lai, and the musical *Guys and Dolls*. The class in which we study these plays meets **Thursday mornings**, 10:00am–12:15 noon, Feb 5th–May 14th. Our four day adventure to see the productions in Ashland departs **Tues. May 5th** and returns late night **Fri. May 8th**. If you are interested, but did not attend the October planning meeting, please contact Jasmin Gerer for more information at jgerer@sccs.net or by leaving a message at 429-3898 x332.

[\[Return to Table of Contents\]](#)

will have a guitar group meeting on **Fridays during games group, from 1:00-2:00**. Beginning guitar players welcome, and advanced guitar players strongly encouraged to come and take turns doing a "teaching." Please contact Therese for information.

Teen Lit Circle

Suki Wessling is exploring the idea of starting a teen reading/discussion group at AFE. If your teen is interested in reading classic and contemporary novels, please [contact Suki](#).

ADVANCED Rocketry

Thanks to the folks who are building and flying higher powered rockets with us! Just a reminder that our schedule through the end of the semester is:

- Wed. 1/7/15, 1:30pm - 3:00pm (Build Class #4 -  - note this is a week later than usual due to winter break)
- Wed. 1/14/15, 1:30pm - 3:00pm (Build Class #5)
- Sat. 1/17/15, 9:00am - 1:00pm LUNAR Launch @ Moffett Field (Launch #2)

Thanks again to everyone who built and launched water bottle rockets, built custom birdie rockets, and even

Enrichment Classes

Music, Movement and Art

Kindergarten-Second Grade

Mondays & Thursdays, 10:00–12:30

Thérèse Johannesson

"What a wonderful group of families! I am grateful to start a brand new year with you!" Therese

Maker Monday: We will "Ring in the New Year" with a bell making workshop and the round, "Ring in the New Year!" The following week we will be doing Painting and Crafting.

Therese will be the Maker Monday teacher for January 5 and 12 followed by Kathleen, from our own Clay Studio through February!

Magical Mystery Tour Thursday: We had a lovely celebration of diverse Winter Traditions on December 18! We also hand delivered our thank you letters to various staff members, which was a lot of fun and greatly appreciated! We will continue with our celebration of the cultures that represent our own families!

Thanks to all who have signed up to share family-of-origin presentations:

- 1/8/15 Grace: France/England/Scotland/Norway
- 1/8/15 Benjamin: Ireland, Scotland
- 1/15 Malia: New Orleans, Germany

braved the drive over 17 to Moffett Field for a busy launch on 11/15. [See photos here.](#)

Questions?

Email: jay@cinemagic.com

Clay Studio

with Kathleen Peppard

Tuesdays, 1-3 pm. Clay Studio is an open studio environment, all ages.

Students under 9 must be accompanied by an adult. The materials fee is \$35 per student per semester (less than \$3 a week). This pays for the clay, glazes, and firings. Partial scholarships are available; talk to your consultant teacher—no one will be turned away.

Glee Club

The goal of Glee Club is to have fun by creating a safe environment for self expression. Under the guidance of an AFE parent, Glee Club participants have the opportunity to sing each week, perform together as a group, learn about movement, and support others in their experiences. Grades 5-12 are welcome to participate. **Wednesdays from 1:30-3:15pm** in the Multi-Purpose Room. This class is FREE. Parent contact: Lucia Paxton (luciasciarpa@yahoo.com) If there are



- 1/22 Theo: Holland, Germany

In the Garden: We harvested our broccoli and onions and had a stir fry for our Winter Holiday Banquet which also included Latkes and applesauce! We will continue our work in the garden with soil testing, adding amendments as necessary and planting as we watch our tulips and daffodils begin to emerge!

A Journey Through the Incredible Human Body

3rd–5th Graders

Wednesdays 10:00–12:30

Peter Deutsch

In January our class will finish this semester's investigation into the human body. We will finish up with a bit more about our senses, then our digestive system and health.

Students should be working on and finishing a home project of their choice to share at the end of the class

on **1/21/15**. The final class will also include a potluck lunch and celebration of our semester together. On 1/7/15 and 1/14/15 we will get to work in the main campus library in the Big Building. We will start class in Room 1 and then head over to the library from 10:30 – 11:15.

Please remember that parents need to sign their student in and out of class. It really helps me if you can do that in a timely way. We will continue to take a

any questions, please connect with me directly. [Click on the photo for a larger view!](#)

Economics for 11th and 12th graders

Thursdays 1-3pm. Fall only. Room 4, big building

In our fourth month, we moved on to personal finances. We budgeted income and expenses for a variety of professions, filled in tax forms, looked at credit cards and other debt, and learned from our guest speaker Babette Brekka about the power of compound interest, saving, and investing. In January, we'll cover career choices, finding and keeping employment, starting our own business, and some interesting tidbits and games from neuro- and behavioral economics.

Contact: Dorothee

Ledbetter, dledbetter@calcentral.com.

Games Group

Come over to Room 2 **every Friday between 12 and 3** for good times with friends old and new, and AFE's very large collection of award-winning and classic games for all ages (K - 100+)! Games Group is facilitated by emeritus mom Tané.

Bring your own games and/or snacks to share as well! The youngest among us can often be found sitting in

short break for nutrition in the middle of class each week so please send a healthy snack for your child. Students should also wear comfortable clothes and shoes since we will play active games and some PE every class.

The Brain Explorer

Middle School

Tuesdays 10:00–12:30

Jasmin Gerer

For questions contact Jasmin at jgerer@sccs.net or leave a message at 429-3898 ext 332.

Express Yourself

Middle School

Tuesday 10-12:30

Nancy Aylsworth

Our weekly class is an opportunity for students to express themselves through oral and written language, with art woven into each day. This month we have explored writing science fiction scenes, descriptions, and the rules of writing dialogues. Our art projects have focused on metal embossing, collage and micrography (examples of this in the future). One homework assignment involved writing in response to this prompt: Clocks as we know them disappear one day. In their place are clocks that reflect personalized hours of the day for each person. [Click here to read](#) a compilation of hours from all of the students' individual hour lists.

the middle of the room playing with Lego or blocks, or outside playing tag, in addition to the games, and parents can usually be found socializing, knitting, etc. while playing games, so truly something for everyone!

High schoolers, please sign yourselves in and out on the form at the checkout counter in the RC.

As our middle schoolers and younger students need to be supervised by an adult while they are at AFE and not in a class, we need 2 parents to sign up for every Games Group to hang out in the yard, keep an eye on the kids, and have fun themselves (getting to know other parents, play a game themselves, knit...).

There will be a sign-up sheet at Games Group, or you can sign up online with [Sign-Up Genius](#).

High School Health

Mondays from 10-12 in room 2, taught by Amanda Clark. We explore physical and mental health issues including strategies for managing stress as well as finding personal balance and physical fitness, healthy eating habits, drug issues, relationships, reproductive health and many other things. This is a candid and honest class and I ask that any interested students be willing to help create a safe environment for all participants. Amanda

For more information please call Nancy at 429-3898 x334.

The Plot Thickens— Creative Writing

High School

Thursdays 1-3:00

Joanne Brown

"The suspense is terrible, I hope it will last."

—Oscar Wilde

Creating reader empathy, concern, danger, and tension are some of the enticing topics covered in class during the month of December. We continued reading and discussing student stories during writing workshops. Tips for revising and editing short stories (when you're done you're not really done . . .) will hopefully inspire our writers to put a final polish on their rough drafts in time for our upcoming short story event in January. Everyone is invited to attend our end of class writing celebration the evening of **Thursday, January 22nd**, at 6:30 pm, AFE Room 2. It is such a pleasure to be a part of this community of writers! Please join us to celebrate their accomplishments!

American Government

11-12th grade

Thursdays 10-12:00

Mark Thomas

[\[Return to Table of Contents\]](#)

Around Town

Clark, ilovefog@sonic.net

AFE Family Choir

Congratulations to the AFE Family Choir for their gift of Song for the County Office of Education's Homeless Family Gathering! This

was a very meaningful and moving event. Our gift of song helped the spirit of this celebration so much! The AFE Family choir, meets Fridays at 3:30-4:45 has been meeting in rm 1 and will continue to do so, as another group has moved into the Palazzo. Please join us for rounds and harmony! Please contact Therese with any

questions: tjohannesson@sccs.net

Madrigal Singers

Huzzah to the Madrigal singers for their two winter performances for the Friday Shakespeare Women's Guild, the oldest group in Santa Cruz founded in 1903. We also sang for the County Office of Education's Homeless Family

Gathering. Both events were moving and meaningful! The AFE Madrigal Group is a group of musicians who read music and have learned the skill of singing in ensemble. We sing moderately challenging early music. We meet informally in members' homes. We formed last Spring in order to "busk" or sing for donations. We

Stop. Think. Connect

Keep your entire family safe online. Santa Cruz Public Libraries are offering cybersecurity workshops in January. [More info.](#)

Parents and Educators

Wednesday **January 7**, 7pm

Aptos Branch Library

Kids 8-15 and their parents

Sunday, **January 11**, 2015 2pm

Downtown Branch Library

Jandy Nelson at Bookshop Santa Cruz

Jandy Nelson's new YA novel *I'll Give You The Sun* explores identity, relationships, integrity, creativity, courage and love with heartbreaking honesty and authenticity. She'll be at Bookshop on **January 28**. Our very own Branciforte Small Schools Rainbow Alliance is working with Bookshop to facilitate the discussion with the author!

Violin/fiddle teacher

Laurie Tannenbaum is an excellent teacher. She teaches out of Sylvan Music on the westside of town. Laurie is great with students of all ages, from beginners to advanced players. She can be reached at: 831-423-4719. I have been a student of hers for a year now, and I am continually impressed with her skill as a teacher and musician. - Wendy Traber

will be singing for the Shakespeare Friday Women's Group on Friday December 19th. The Friday Women's Shakespeare group gave a generous donation to the AFE Ashland Shakespeare Trip Scholarship Fund last year. Let us know if you have an event for which you'd like us to sing! Huzzah! Please contact Therese with any questions: tjohannesson@sccs.net

Scottish Country Dance

Wednesdays 3:30-4:30, in the Branciforte multi-purpose room. Come try it once for free! Ages 8 and up. It's great exercise for the brain and the body, and fun too!

Contact: meridith.a.cook@gmail.com

Origami Club

Please drop in to the Origami Club **Fridays 12-3** during Games Group. Rowan will be there with a fabulous collection of origami books, plenty of paper, and awesome sample models. Fold everything from penguins to bunnies to winged unicorns -- and many more. No experience necessary; Rowan will guide you through fold by fold if desired!

Shawn's Super Sewing Class

Do you have an interest in learning to

[\[Return to Table of Contents\]](#)

Homeschool Highlights Kickstarter success

AFE alumni **Abe Karplus** and **Zohar Wouk**, joined by current AFE sophomore **Abe Jellinek**, launched a successful Kickstarter campaign for the first product from their start-up company, Futuristic Lights. They made their \$20,000 goal in less than half an hour and are on schedule to more than double their take before the campaign is over.

- [Visit the Kickstart campaign](#)
- [Visit their Facebook page](#)

Support our performers

Upcoming musical theatre, with performances by AFE middle schoolers in two productions.

- All About Theatre presents, Youth ages 8-13 , the original screen play production of "Thoroughly Modern Millie" **January 16th through 24th**
- Teens production, ages, 13-21, the original Broadway version of "The Addams Family," **January 30 through February 8**

sew using a sewing machine? If you have never sewed before but want to...this is the class for you. We start with paper sewing and move slowly from there. Projects include coasters, to fabric shopping sacs to jammie pants. Shawn's Super Sewing Class is scheduled for Fall, **Thursdays 1:00 to 3:00**. Please contact Shawn by email, shawnlorette@mac.com or by phone, 831-426-2004. Students provide their own sewing machines, scissors and fabric. There is a small class fee of \$5.00 each class.

Water the Weeds Teen Improv

4-5:30 on Wednesdays until Nov. 19, Room 2 at AFE. It's liberating, social and fun! To register, call Joya at 831-426-2935. This art form is personal, collaborative, tender, playful, relaxing, adventuresome and a true gift to the audience. The first class is free if you're new to Water the Weeds.

Rainbow Alliance

The Rainbow Alliance meets **Fridays from 3-4 pm** at the Branciforte Small Schools main building in room #9. All teens from the Small Schools (including AFE, Ark, Costanoa, Delta, and Cypress) are welcome! This club is for all students interested in discussing issues important and/or

Both will be performed at Loudon Nelson Theater. These productions are always amazingly professional and the talent is outstanding. The collaboration with Cabrillo Stage and other theater in Santa Cruz gives students the outstanding opportunity to work with professionals in choreography, musical direction and stage production. Come and experience, be delighted and enjoy these performances showcasing the extraordinary talent in our community.

[\[Return to Table of Contents\]](#)

related to LGBTQIA rights and expression, and that want to get involved in the community. Come and check it out! [E-mail Caitlin](#) or check out the "[Small Schools Rainbow Alliance](#)" Facebook page for more updates!

[\[Return to Table of Contents\]](#)

AFE Parent Club

What's the Parent Club?

The AFE Parent Club financially supports the AFE community. In the past, we have provided funds to enable or enhance programs, activities, and events. We also help with supplies and resources. Some of the things that have been supported by the AFE Parent Club in the past few years include: Theater for all ages, sports teams for grades 6-12, Clay Studio, Games Group, Economics class for high schoolers, Orff music for elementary students, family poetry workshops, field trips, staffing for the resource center. We also have donated supplies for Family Art Night; resources—books, games, audio CDs, DVDs—for the resource center; classroom supplies for teacher-led classes; art supplies for the Palazzo Studio; and lots more.

The Parent Club relies on donations and fundraising in order to offer support for all these things. Without fundraising, these programs, classes, activities, and resources will no longer be available at AFE. Please take the time to see how you can help by reading and following the Everyday Fundraising Checklist below that will help you help the Parent Club with as little hassle as possible.

Thank you for supporting the AFE Parent Club.

—The Parent Club Board

AFE's Everyday Fundraiser Checklist

Our ongoing fundraiser are all ways to make money for AFE doing the things you already do! We believe that if everyone at AFE participated in, and encouraged their friends and family to participate in these easy programs it will go a long way towards our fundraising needs.

- **eScrip and eScrip Online Shopping Mall:**
 - Register online so that a portion of your purchases is donated to AFE. *See details below.*
- **Staff of Life Scrip:**
 - Use Staff of Life Scrip whenever you shop there. *See details below.*

- **New Leaf eCard:**
 - Pre-purchase a New Leaf eCard. *See details below.*
 - Ask your friends and family to purchase Staff Scrip or eCards from AFE.

More information about these and other fundraisers is available on the [AFE Website's Fundraising page](#):

Escrip

Escrip is an easy way to donate to AFE. Follow these instructions to get registered:

- **eScrip:**
 - Register your credit, debit, and grocery cards so that a portion of your purchases is donated to AFE. Go to www.escrip.com to register your cards. The AFE Parent Club's group # is [500007112](#).
 - Ask your friends and family to register their cards for AFE.
- **eScrip Online Shopping Mall:**
 - [Sign up and go through the eScrip online portal whenever you shop online](#) and up to 16% of purchases will be donated to AFE. You can also sign up for Auto Earn so you don't have to go through the Mall every time.
 - Ask your friends and family to use the [Online Shopping Mall portal for AFE](#).

Staff of Life Scrip

Please contact Melisa Schwarm to buy Staff of Life Scrip: Use the contact info on the roster for Otto or [send email](#). I am happy to answer any questions and explain how you can contribute to AFE fundraising just by using scrip to buy anything from Staff. There is NO cost to you, the donation to AFE comes from Staff of Life when you use scrip for your purchases!

New Leaf eCards

Leaf Community Markets offers natural and organic foods and a convenient way to raise money for our school. Use your eCard when paying for groceries and feel good knowing you and New Leaf are supporting the education of our children. There are 3 New Leaf stores where your cards will work:

- 41st. Ave., Capitola
- Pacific Ave., downtown Santa Cruz
- Fair Ave., on the Westside

There are 3 NL locations your card will NOT work:

- Felton
- Halfmoon Bay
- Boulder Creek

This is how it works...

Purchase a New Leaf Gift Card (eCard) from me (with a check made out to the AFE parent club or cash) and a percentage of that amount goes directly back to AFE:

- 4% on \$50
- 5% on \$100,\$250,and \$500



You may also order \$150, \$200, or even \$1,000. The amount must be in increments of \$100's or \$50's.

I will place the order, deliver your card to the RC, and maintain the last 6 digits of your card number. When you use your card, select gift card as your method of payment. Once your card is empty DON'T THROW IT AWAY. Your card may be refilled with those 6 digits.

Orders will be placed once a month. Please email or call when you are ready to order or refill your card. Payment must be received ASAP. You can put a check or cash in the New Leaf envelope at Molly's desk in the resource center. Please make checks out to AFE PARENT CLUB. I'll be placing the order on Thursday, September 11th. Payment must be in by Wednesday, September 10th no later than 3pm.

Please respond by email directly, NOT TO THE BULLETIN BOARD.

Thank you very much for participating, we can use every bit of support right now.

Victoria Harder, vlharder@yahoo.com

[\[Return to Table of Contents\]](#)

Newsletter submissions

Parents, staff, and students are encouraged to submit content for our newsletter. The submission deadline is 1 week before the first day of each month. We especially need content for **AFE News**, **Homeschool Highlights**, **Homeschoolers Abroad**, and **Student Showcase**. If you would like to write a short piece on any homeschooling-related topic, please do! [Email Suki](#).

Copyright © 2015 Alternative Family Education, All rights reserved.

[unsubscribe from this list](#) [update subscription preferences](#)

MailChimp.