



Welcome to April!

Quick Dates for this month:

Date	Event	Time
4/14	70's Dance	7pm
4/19	Parent Club Meeting (new date)	2pm
4/25	AFE Community Council	1pm
4/25	Yearbook Group Page contact deadline	email Zan
4/28	Talent Sharing [info]	7pm
4/29	Día de los Niños [info]	7pm
5/16	Yearbook Individual Page submissions	email Zan
5/17	Parent Club Meeting (new date)	2pm

This month at AFE

70's Dance

Join us for a night of 70's fun at our JSA fundraiser dance on **Friday, April 14th, 7 PM - 10 PM** in the multipurpose room. There will be refreshments for sale all night. All ages are welcome. Make sure to show up in 70's clothing and get ready to have a night full of fun and dancing! Admission is \$5 per person or \$15 for a family. Reminder that all non-AFE students need a permission slip!

Parent Club Meeting Upcoming Dates

Table of Contents

- [This month at AFE](#)
- [Save the Date](#)
- [AFE Community News](#)
- [Enrichment Classes](#)
- [AFE Community Classes](#)
- [AFE Talent Sharing 2017](#)
- [Yearbook Guidelines](#)
- [Homeschool Highlights](#)
- [Around Town](#)
- [AFE Parent Club](#)
- [Newsletter submissions](#)

Communication at AFE:

- [Staff directory](#)
- [Calendar](#)
- [Class information](#)
- [Online Bulletin Board](#)

- Wednesday, April 19 at 2:00pm
- Wednesday, May 17 at 2:00pm

We hope you can join us!

FashionTeen

AFE Fashion Club is participating in FashionTeen Santa Cruz! Five students will be designing and modeling outfits made from re-purposed materials at the Annual Fashion Show at the Santa Cruz Civic Center on **April 21st at 7pm**. [Click here for tickets](#). Please come support us! You are sure to be inspired by all the talented students in Santa Cruz County

AFE Talent Sharing

Friday, April 28th 7:00.

Dancers, musicians, martial artists, comedians, actors, mathematicians, scientists, magicians, jugglers, and



talents of all stripes welcome! Step right up to one of the greatest variety shows on Earth! ***Please fill out your Talent Sharing Form complete with the way you'd like to be introduced and drop it in the envelope outside Therese's office door by April 14.*** [Click here for details](#) about performing and attending!

4th Annual Día de los Niños

Braniciforte Small Schools Celebration and Fundraiser

10am - 2pm April 29th

The AFE parent club is joining in on the fun! We will be hosting a couple of craft tables and a cakewalk! Other activities include face painting, a piñata, jumpy house, and food for sale. Admission and some activities are free. Everyone is welcome so tell your friends! (Contact [Meridith](#) or [Zan](#) if you would like to help.) [Click to see flyer](#).

AFE Community Council

Our AFE Community Council meets monthly as an opportunity for parents, students and staff to meet to

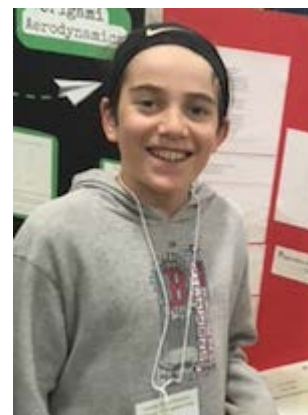
Parent Club

Support AFE! Visit [the Parent Club box](#) at the bottom of this page.



This month's photos!

[Click here for photos of AFE events, students, and projects](#)



discuss student needs, organize family efforts in support of AFE, and brainstorm about anything you bring to the meeting. Our regular monthly meetings are the 4th Tuesday of every month in Palazzo Studio from 1-2 pm - **Tuesday, April 25**. All students and family members are welcome!

Contact Nancy Aylsworth if you have questions at 429-3898 x334.

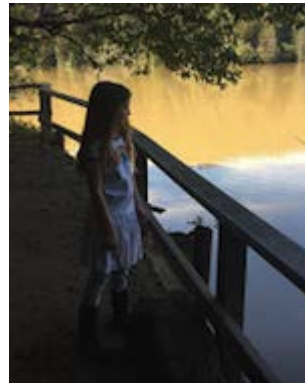
Save the Date

Fall Campout

For those of you who like to plan ahead...

Be sure to save **September 15-17, 2017** for our fall AFE CAMPOUT!! It's fun, so tell your friends!!!

[\[Return to Table of Contents\]](#)



AFE Community News

News from the RC

We have some great new materials on the New Arrivals shelf and the games shelf by the windows - books, games, DVDs, audiobooks. And a big thank you for big loads of game donations from the **Ouse** and the **DeMars** families! Awesome library volunteers **Mollie, Isaac, Liv, Lucy**, and, most recently, **Julie (Drew and Morgan's grandma)** made them all ready for checkout. **Ayala** has organized shelves and also made new books and games ready, **Jonah P.** has helped with reshelving, and **Jasmin** has cleared away the undergrowth admirably!

If there's a book or game you have enjoyed, please take some time to make a small recommendations card for it. You can find cards next to the check-out card basket or on the teen lit bookshelves.

Board games boost executive function (visual-spatial processing, sequential searching,

working memory, mental speed, attention, concentration, processing speed, impulse control, reasoning, planning, and problem solving), social skills and confidence, and resilience, in addition to reading and math skills. I recommend a family game night, and I'm always ready to introduce you to a new game at AFE!

Happy spring break!

Love, Dorothee [[email](#)]

AFE Info Evenings

AFE Info Evenings in May

If you know someone who is interested in homeschooling next year, let them know that we are having an informational evening coming up in May. To find out more, interested parents should fill out our AFE inquiry form online at <http://bssc.sccs.net/schools/afe> or contact Jasmin at 429-3898 ext 328.

Science Fair Results

AFE Takes Top Prize at Santa Cruz County Science & Engineering Fair, sweeping awards for each AFE participant!

For the second year in a row, AFE's student scientists swept the Santa Cruz County Science Fair Awards at the ceremony on 3/20/17. Competing against 336 projects from around the county, each of the 5 AFE projects were recognized with an award, including the top prize, Best of Show! Hands-on projects and diving deep into content are hallmarks of homeschooling: congrats to all of our student scientists and engineers!

- AFE students **Max Freedman** and **Jackson Damhorst** won Best Overall Senior Project for: Effects of Varroa Mite Treatments on Bee Memory. Their best of show win means they'll compete at the International Science and Engineering Fair (ISEF) in Los Angeles in May, as well as the California State Science Fair in Los Angeles in April. They were awarded First Place/Senior/Animal Sciences and special awards as well. Last year, Freedman won a first place, senior award, for his project "Bang For your Buck: Engineering a Hydrogen Fuel Cell with Common Materials."
- AFE student **Benjamin Kolland** won First Place/Senior/Physics for his project: Drag-n-Fly: Optimization of Drag Coefficient Calculations from Rocket Altimeter Data. He was also awarded 2 special awards. Last year, Kolland won Best of Show in the 2016 AFE winner sweep, as well as a first place, senior award, for "Project ARROW: Autonomous Rocket Return On Wings." He will also compete at the California State Science Fair in April.
- AFE student **Scout Bauman's** project "Do Plants and Music Mix?" won Second Place/Junior/Plant Sciences.
- AFE student **Jonah Bell's** project "AM/PM Guinea Pigs" won Second Place/Junior/Animal Sciences.
- AFE student **Kumalo Alm's** project "Make It Loud: How Distance Effects Volume" won Project of Merit/Junior/Physics

AFE mom **Patty Freedman** led Google Hangout sessions for setting up and working through a science fair project [[click to read more!](#)]. Big thanks to her for helping all those who participated in the AFE Science Fair and County Fair.



Yearbook Guidelines Available

Submit your page to this year's AFE Yearbook. [Click here for detailed instructions.](#)

WE WANT YOU TO JOIN PARENT CLUB!

The Parent Club is expanding.

We are looking for people from our community to fill our new positions.

Parent Club is our non-profit organization that supports activities like sports, clay and theater. We meet once a month.

Please contact Meridith Cook at (831)239-9065, or [by email](#) for more information. [[Read more below.](#)]

IMPORTANT REMINDER

Please make sure that all foods brought on the AFE campus and to all AFE events are **peanut and peanut oil free**. This includes lunches, snacks, food projects, bake sale items and all potluck dishes. Thanks so much for your cooperation. We strive to make all of our AFE events accessible to everyone.

[\[Return to Table of Contents\]](#)

Enrichment Classes

K-2 Learning Circle

Kindergarten-Second Grade

Thérèse Johannesson [\[email\]](#)

Science: Studying Water and Watershed, we took a field trip to Loch Lomand Reservoir and learned about erosion. We also helped Becky Steinbruner by assembling parts of AFE's new water catchment system.

Spanish: We continue working on our repertoire of Spanish songs, including "De Colores," "Somos el Barco," "Agua, Tierra, Sol y Amor," "Esta es tu Tierra" ("This Land is Your

Land"), "¿Qué Color es Ese?" and practicing colors and body parts in Spanish.

Moving: We'll continue our daily "Run for Fun" and continue to graph our miles



Math: As a common core math activity we worked on our Problem of the Month, "Party Time!"

In the Garden: We're turning soil, weeding and planting!



Music: We're playing partner song and rhythm games in English and Spanish, adding instruments, and singing in rounds.

Literacy: We'll visit the library on our first day back in April, 4/13. We continue to play with letters and words, write in our journal and read stories and our agenda daily.

Mindfulness: We practice mindfulness and breathing with guided visualizations. We are learning to be comfortable with calm, so that we can better express ourselves and be present to others.

Physics for Fun

Grades 3-5

Wednesdays 10-12:30 at the Palazzo Studio

Mark Thomas [\[email\]](#)

Physics for Fun continues to meet Weds from 10-12:30 in the Palazzo Studio. In April we will continue to investigate the properties of simple machines and Newton's Laws. Our hands on projects will include building and experimenting with those machines and I bet a catapult or two will appear in the mix. This month also marks the start of the research report draft process. All students will outline, draft and write a research report on a physicist or engineer of their choice. The report and corresponding class presentation will be due the first week of May. Thanks, Mark

Around the World in 84 Days

Grades 6-8

Jasmin Gerer [\[email\]](#)

Tuesdays 10:00-12:30 in classroom 2

North, Central, and South America, Africa and Europe – we have "traveled" through 2/3 of the countries on earth! [Check out this song](#) which gives you a glimpse of our voyage.

Students have been learning a tremendous amount as they research different countries, share their newfound knowledge with each other, keep a travel journal recording their adventures, and have fun dancing along the way. A special thank you to Rena Durbin and Aliya for teaching us some West African and Israeli folk dances in March. Thank you also to Laurel who shared a Quran that her mom, Elizabeth Andrews, brought back from Qatar where she had lived and worked. We admired the beautiful Arabic script, and listened to a children's story that Laurel told as she paged through the book from back to front.

In April we will head through Asia, crossing the Russian steppes, learn a bit of Russian,

puzzle over the Cyrillic alphabet, cross Central Asia, head into the Himalayas, and try our hand at rangoli art when we head to India.

Questions? Contact Jasmin at 429-3898 x332 or by email.

Ancient Civilizations

Grades 6-8

Tuesdays 10:00-12:30, Palazzo Studio

Nancy Aylsworth [[email](#)]

We are well into our journey to some of the fascinating ancient civilizations from around the world. This month we looked at the Indus Valley civilization with its advanced plumbing and sewer system. Why did it disappear? Inquiring minds want to know. From there we looked at empires in ancient Africa, from the Kush to those in west and north Africa. In our salt-gold trade simulation, students determined that Ghana had an income advantage as the "middleman" by taxing the trade going both directions. Students shared mini-presentations on empires they learned about. Students made gorgeous African-inspired masks that are hanging in the Palazzo. (see attached photo) Be sure to stop in to see them. Everyone is reading a (mostly fiction) book related to ancient times and will share reports on them right after spring break. Lastly, we have spent a couple of weeks learning about the early dynasties and inventions of China. It was very fun to see the commercials students came up with for these ancient inventions. Next month we will have a field trip to the Asian Art Museum to complete our study of China. Any questions please contact Nancy Aylsworth 429-3898 x 334.

Economics

High School

Thursdays 1-3pm AFE Room 2, starting on 2/3

Peter Deutsch [[email](#)]

We have now covered info about types of businesses, some aspects of financial literacy, savings, debt, credit and investing, business cycles and economic performance. Everyone is trying their hand at trading stocks and mutual funds in an online contest for our class. Students are finishing their research paper project and will share that at class on 4/13/17.

This month we will also study labor, jobs and employment, training and education as well as money and banking. Note: We will take a field trip on 4/27/17, meeting at 1:00 at Lighthouse Bank for a tour and presentation.

Health

High School

Joanne Brown [[email](#)]

Thursdays, from 10 a.m. to 12 p.m.

We've had many presenters this month focusing different aspects of health.

Dr. Adam Yarme joined us to discuss some of the potential influences of media on teens. His talk was entitled #MediaDiet. The students had great questions for him -- lots of pertinent information and lots to think about!

Amber Parker of Planned Parenthood shared information about sexually transmissible infections (STIs) and sexually transmitted diseases (STDs). She also shared various forms

of pregnancy prevention.

Healthy Relationships and Consent were the topics discussed by presenters from Monarch Services [[link](#)], which strives to empower individuals, families and communities to take action against violence and abuse. As mentioned during their presentation, Monarch Services staffs a 24-hour crisis hotline that anyone can call if they are in need of help or just need to talk: [Crisis Hotline # 1-888-900-4232](#).

Registered nurse Esther Greenburg returned to finish up CPR training for our class, which included how to properly use the AED defibrillator for life-threatening cardiac emergencies. Esther will offer an additional training outside of class for those want to receive CPR certification.

Many thanks also to our guest presenter Aimen Al-Refai, senior black belt instructor from Aikido of Santa Cruz. Aimen is the Teen Class aikido instructor and is respected for his "engaging, humorous style of teaching, complemented by his serious focus and wonderful presence". Aimen shared aikido philosophy and techniques, emphasizing the connection between aikido and health.

Next week students will present midterm reports and three minute Lightning Talks during class. They have chosen a fascinating variety of topics and I look forward learning from them!

Basketball Season is in Full Swing

All 6th to 12th graders girls and boys are welcome to join our team. We practice Mondays & Wednesdays from 3:15 to 4:30 at AFE and have league games every Friday between 10-2. We have had a great turnout this year and have an excited and fun squad. If interested please contact Mark 566-0631.

AFE Soccer

Our AFE Spring Soccer Season has begun! Many folks have signed up so it promises to be a fun season. Practices are on our own B40 small school field from 2:30-4:00, Mondays and Tuesdays. You do not need to come to both practices, but it is encouraged. You do not need to play in the games in order to come and practice with us at either or both of our soccer practices.

A big thank you to the Damhorst family. Kris Damhorst has agreed to coach our practices while Darla Damhorst will be our Friday games coach.

Remember to bring water and sunscreen to both games and practices.

Forms: Only players who come to the Friday games need to complete the forms. They must be complete for you to play on Friday! I will pass out forms at the end of practice tomorrow. Please let me know if you plan to play in the Friday game!

We will have our first game this Friday, 3/31. We do not know the time yet, but will post as soon as we know.

Also, a request for snacks and jersey washing coordination and families help. Anyone ready to start that this week?

Thanks and see you soon!

[Peter](#) and [Therese](#)

4th Annual
Día de los Niños!

Branciforte Small Schools Celebration and Fundraiser

**Saturday
April 29th**

10am - 2pm

840 N. Branciforte Ave.
(at the corner of Branciforte Ave.
and Water St.)

Raise funds for
public education.
All proceeds go to BSSC.

- * AFE
- * Monarch
- * Costanoa
- * The Ark

**Live
entertainment**

Food for sale

Jumpy House

Face Painting

Games/Piñatas

Art Activities

**Book Giveaway &
School wide Rummage
Sale!**

FREE ADMISSION!

AFE Community Classes

Clay Studio UPDATE

Tuesdays from 1-3pm. Clay Studio's Spring Break: I will be out of town starting 3/25, and will return in April. So there will be no clay March 28 thru April 18th. Clay will resume April 25th for 5 weeks. See you April 25th.

Kathleen

AFE TARC Team: Season Summary

The AFE TARC team's season ended (probably) on 3/13. The wind and heat (90+ degrees) kept things interesting, as did the fact that we were flying newly built rockets. The final design was cardboard and we were getting between 2 and 5 flights before each rocket was too broken up to fly.

Our first flight on 3/13 landed in a tree. Goodbye to another parachute and rocket. Rain was forecast for the next week, so with few clear days left to qualify and two National Association of Rocketry observers on hand, we decided to go for our three qualifying flights. The lowest two scores out of three are submitted.

The qual flight results:

- Flight one score: 59.36.
- Flight two score: 8.
- Flight three score: DQ (it would have been a 10) but once again we had kevlar breakage!

Now we wait. Our score isn't going to be low enough unless lots of other teams had the same weather and DQ troubles. But it was a great year of learning! The top 100 finalists get announced on Friday April 7th, and we'll be excited to see who earned a spot at Nationals.

Congrats to the AFE TARC Team: Adian Brekka, Team Captain, 10th; Benjamin Kolland & Keith Veditz, 12th; Hunter Bauman and Jennifer Veditz, 8th. Jay Friedland, team mentor. [\[Visit TARC team page\]](#)

Special Thanks to the AFE TARC Team sponsors [\[Visit TARC sponsors page\]](#)

- Platinum Sponsor: The Brekka Family
- Bronze Sponsors: Globy, The Koloski/Oyallon Family, Jolly Logic
- Copper Sponsor: Roberta Zakarian



Music at AFE Hamilton Singers

We are learning solo and ensemble parts in SATB. We are preparing for our presentation, which moved to later in the Spring. Please contact Therese at tjohannesson@sccs.net.

Bluegrass/Celtic Band

Middle and High School group. **Fridays at 2:30-3:45** in Palazzo Studio. Our first tunes are "Shady Grove," "Road to Lisdoonvarna," "Spootiskerry," and "I'll Fly Away," and a set of tunes that were featured in the movie "Titanic." We have a group of 10-12 musicians including fiddle, whistle, guitar, banjo and voices, and are welcoming all musicians. Please contact Therese at tjohannesson@sccs.net.



Madrigal Singers

Saturdays, 10:00-11:30. We are practicing a Nueva Canción song, "La Andina," a shape note song, "Big Sky," and several madrigals. If you are an experienced choral singer with an affinity for early music and would like to join our group, please [contact Therese](#).

AFE Theater

K-2 Jungle Book Stories theater rehearsals Mondays 1 -2 pm. Performance is May 1st. Please contact either [Jasmin](#) or [Zan](#).

CREATE Space/Open Art Studio

Fridays 12 to 2 in the Palazzo Studio

CREATE Space/Open Art Studio is continuing through the second semester. Chris Baker is the new person in charge of the studio on Fridays. Come join her for all your creative endeavors from noon until 2 every Friday in the Palazzo Studio. Chris is an accomplished knitter and has a wealth of knowledge and experience to share with anyone wanting to learn or improve their knitting skills. All of the other usual art supplies will still be available for everyone to use. Come out and get creative, whether it be fiber arts, drawing, painting, Shrinky Dinks, or whatever else might move you.

Global Environmental Challenges

10th-12th Grade

Monday/Wednesdays 1:00-2:15pm

Taught by AFE alum Barak Wouk

How might climate change affect you? What could it mean for society? How might society respond to this kind of challenge? In this class we will explore these types of questions using the latest science. Barak studied Sustainable Development at Columbia University and Ecological Design at Prescott College. Contact him at barakwouk@gmail.com.

Reasoning and Logic

Reasoning and Logic for middle and high school students is held **10:00 a.m. to 12:00 p.m. Mondays**. For info, please email Elizabeth Andrews directly: elizandrews24@gmail.com.

JSA

JSA (Junior State of America) is a student-run organization focused on politics and current events, and AFE students can participate! Our chapter meets every **Wednesday at 2:30-4:00 pm** in Room 2, with a variety of activities such as debates, thought talks, and crisis scenarios. JSA is predominantly a high school club, but interested eighth graders are welcome to attend!

Fashion Club



Tuesdays from 1-2:30pm in the Palazzo. If you have questions, please let me know! [Email Laura](#).

Water the Weeds Teen Improv

Hey folks. Collaborative spontaneous unscripted plays are back. Come explore this way of being s human. Iris is an amazing assistant and we have planned a spicy session. Nine classes and a show. Show is on

Sunday Nov. 13. \$100 Sibs: \$80 each

Rm 2, 4:15 to 5:45 Sept 21-Nov 16 Wednesdays

Love and blessings, Joya. 831-426-2935. Call to register.

Games & Puzzles Group

Come over to Classroom 2 every **Friday from noon to three** (or whatever part of those three hours work for you) for good times with friends old and new, and AFE's very large collection of award-winning and classic games for all ages! Bring your own games and/or snacks to share as well! The youngest among us can often be found sitting in the middle of the room playing with Lego or blocks, or outside playing tag, in addition to the games, and parents can usually be found socializing, knitting, etc. while playing games, so there is truly something for everyone! There is also a group of young artists who like to come and sketch and show each other their artwork in addition to playing games.



Native American Pow Wow Workout and Parenting Classes



FREE at BSSC

Join us in the MPR for a family workout. Stay for parenting classes.

Tuesdays 6:00-8:00

Pow Wow Workout 6:00- 6:45

Parenting class 6:45-8:00

Contact [Bianca Crowbear](#) for more information.

(Her group performed at our campus-wide Día de los Niños celebration last April.)

[\[Return to Table of Contents\]](#)

AFE Talent Sharing 2017

Dancers, musicians, martial artists, comedians, actors, mathematicians, scientists, magicians, jugglers, and talents of all stripes welcome! Step right up to one of the greatest Variety Shows on Earth!

Talent Sharing forms are in the RC. Please fill out your Talent Sharing Form complete with the way you'd like to be introduced and drop it in the envelope outside Therese's Office Door by April 14.

DEADLINE FOR SUBMISSIONS IS Friday, April 14 , 3:00!! All acts subject to approval by the AFE staff, so we need to see lyrics, scripts, etc. by April 14 in order to give approval in a timely way for any necessary revisions.

Talent Sharing Performer Information:

- 4:00-6:00pm **Individual Acts Sound Check** by appointment 4:00-6:00pm
- 6:30pm **Performers' Meeting:** All performers meet in the auditorium ready to perform.
- 6:45: **Doors open**
- 7:00pm **Talent Sharing Starts!**

Talent Sharing Potluck Schedule:

- 5:30pm Arrival, Set-up,
- 6:00pm Potluck Starts at 6:00

Potluck Info: Part of our Talent Sharing includes sharing our cooking talents! And to ensure that we have sustenance and not too many desserts we have a system that rotates through the year. Please look at the list below and use your child's last name to determine what to bring. Bread and butter and drinks will be provided by our staff. Please plan to bring enough to serve at least 10–12 people. PLEASE PLAN AHEAD.

In the past we've had some trouble having enough food at the beginning of the potluck when the performers eat.

- A–J Salads • K–S Desserts • S–Z Main Dish

Green Reminder for all: Rather than just using items once and tossing them for convenience, it is traditional at AFE to reduce and reuse at our potlucks. That is why we bring our own washable dishes, cups, & eating utensils. In this way, we minimize our homeschool community's impact on the earth's resources and landfills! Thank

You! Therese Johannesson, tjohannesson@sccs.net

Yearbook Guidelines

Photos—if you have photos you would like to contribute to the yearbook, please transfer them to the iMac in the textbook room. (Detailed instructions are posted next to the computer.) If it is difficult for you to transfer photos in person, please [email Zan](#) to arrange another method.

Groups/events—if you led or are leading a group or event that hopes to have a page in the yearbook, please [email Zan](#) by **April 25th**.

Individual pages—Every student has the opportunity to create a page of pictures and text to commemorate their year. See the submission guidelines and [email Zan](#) if you need help!

Orders—you may order and pay for your yearbook in the RC (cash or check only). Orders must be received and **paid for by May 24th**.

Submission Guidelines

- Page size: 8.5 x 11 inches
- Orientation: portrait
- White border/margin: at least 1/4 in. on all sides.
- File Format: jpg (max. quality) or PDF
- Resolution: 300 dpi
- Submit as email attachment to afeyearbook2017@gmail.com

Individual pages

Every student has the opportunity to create a page of pictures and text to commemorate their year! Follow all the guidelines above plus:

- File name: Lastname_firstname_YB17.extension (i.e. John Smith's jpeg file would be Smith_John_YB17.jpg)
- Deadline: **Tuesday, May 16th**

Events/classes pages

If you are submitting a page for an event/class please follow all the general guidelines above plus:

- File name: Event/class_YB17.extension (i.e. the Soccer file name would be Soccer_YB17.jpg)
- Deadline for events or classes completed prior to April 1: **Monday, May 1st**
- Deadline for events or classes completed after April 1: **Tuesday, May 16th**

Homeschool Highlights

Online Science Fair Club Success

After 10 weeks of training, a small but committed group of AFE students participating in OSFC (Online Science Fair Club) reached their goal at the Santa Cruz County Science Fair. The club, led by AFE parent Patty Freedman, met weekly in an online classroom where students had mini lessons and coaching on different topics like choosing a project, designing experiments, and preparing for judging.

The original goals for OSFC were to:

- Get kids to do more science
- Participate in our local science fair
- Have fun working on long term projects

Patty created OSFC because she'd seen over the last couple of years that some parents and kids felt discouraged or even intimidated about taking on the science fair and didn't participate. But Patty feels that homeschooling is a perfect fit for science fair because "doing projects that kids are passionate about is what homeschooling is all about!" OSFC is designed to give parents and students support they need to get over the finish line.

At the beginning of OSFC in November, students reported:

"Feeling nervous" and "Looking forward to doing a good project" and "Excited!"

Over the course of the 10 week OSFC students experienced increased levels of confidence in learning math, science, participating in science fair, and doing long term projects.

Students reported:

"It was a lot of work, but I had fun and it was a learning experience."

"I loved the online meeting format so I could hear from other students that I do not usually have a chance to meet. I look forward to participating more fully next year and feel much more comfortable starting a long term project now."

As with any first time project, there were some learning opportunities, but overall OSFC was big success. AFE sent 6 projects to our County Science Fair. That's a 300% increase in participation! Not only were there more projects this year, but AFE students were recognized for their outstanding achievements. Overall, AFE won the grand prize, two first prizes, two second prizes, a Project of Merit, and numerous Special Awards.

Patty hopes more students will be energized to do science fair next year and join OSFC.



Around Town

Moss Landing Marine Labs

Open House Weekend...Totally Free

When: April 29-30, 2017, 9:00 am – 5:00 pm

Where: 8272 Moss Landing Rd., Moss Landing, CA

What: Arts & crafts, food, drinks for purchase, live touch tanks, marine life puppet show, meet faculty, staff, students, ocean fun for all ages, raffles & prizes, research talks. [Click for more information.](#)

62nd Annual High School Art Show

Since 1955, the Santa Cruz Art League's High School Show has been providing one of the only professional gallery exhibitions for high school age artists in our county. Students from local public, private, charter, home and at-risk schools are invited to benefit from the Art League's state-of-the-art space and give the audience a preview of the next generation of local artists.

Dates/Times:

Exhibition: Fri., April 28– Sun., May 21 (Gallery Hours: Wed.-Sat. 12-5, Sun. 12-4)

Reception: Sat., May 6, 3-5 pm.

Drop-Off: Tues. & Weds. April 18 & 19 from 3-6 pm @ (Santa Cruz Art League, 526 Broadway). Ceramics may come in as late as Mon. April 24th from 3-6.

Contact your consultant for entry forms.

[\[Return to Table of Contents\]](#)

AFE Parent Club

What's the Parent Club?

The AFE Parent Club financially supports the AFE community. In the past, we have provided funds to enable or enhance programs, activities, and events. We also help with supplies and resources. Some of the things that have been supported by the AFE Parent Club in the past few years include: Theater for all ages, sports teams for grades 6-12, Clay Studio, Games Group, Economics class for high schoolers, Orff music for elementary students, family poetry workshops, field trips, staffing for the resource center. We also have donated supplies for Family Art Night; resources—books, games, audio CDs, DVDs—for the resource center; classroom supplies for teacher-led classes; art supplies for the Palazzo Studio; and lots more.



The Parent Club relies on donations and fundraising in order to offer support for all these things. Without fundraising, these programs, classes, activities, and resources will no longer be available at AFE. Please take the time to see how you can help by reading and following the Everyday Fundraising Checklist below that will help you help the Parent Club with as little hassle as possible.

Thank you for supporting the AFE Parent Club. We are a 501(c)3 nonprofit!



—The Parent Club Board

AFE's Everyday Fundraiser Checklist

Our ongoing fundraisers are all ways to make money for AFE doing the things you already do! We believe that if everyone at AFE participates in and encourages their friends and family to participate in these easy programs, it will go a long way towards our fundraising needs.

- **eScrip and eScrip Online Shopping Mall:**
 - Register online so that a portion of your purchases is donated to AFE. *See details below.*
- **Staff of Life Scrip:**
 - Use Staff of Life Scrip whenever you shop there. *See details below.*
- **New Leaf eCard:**
 - Purchase a New Leaf eCard. *See details below.*
 - Ask your friends and family to purchase Staff Scrip or eCards from AFE.
- **Whole Foods Gift Cards:**
 - Buy \$100 gift cards to pay for groceries
- **ScripNOW Electronic gift cards:**
 - Use or gift these electronic gift cards to raise money for AFE. See details below.

More information about these and other fundraisers is available on the [AFE Website's Fundraising page](#).

Escrip

Escrip is an easy way to donate to AFE. Follow these instructions to get registered:

- **eScrip:**
 - Register your credit, debit, and grocery cards so that a portion of your purchases is donated to AFE. Go to www.escrip.com to register your cards. The AFE Parent Club's group # is [500007112](#).
 - Ask your friends and family to register their cards for AFE.
- **eScrip Online Shopping Mall:**
 - [Sign up and go through the eScrip online portal whenever you shop online](#) and up to 16% of purchases will be donated to AFE. You can also sign up for Auto Earn so you don't have to go through the Mall every time.
 - Ask your friends and family to use the [Online Shopping Mall portal for AFE](#).

Staff of Life Scrip

Please contact **Sadie Reynolds** to buy Staff of Life Scrip: Use the contact info on the roster for Rowan H. or [send email](#). I am happy to answer any questions and explain how you can contribute to AFE fundraising just by using scrip to buy anything from Staff. There is NO cost to you, the donation to AFE comes from Staff of Life when you use scrip for your purchases!

New Leaf eCards

Leaf Community Markets offers natural and organic foods and a convenient way to raise money for our school. Use your eCard when paying for groceries and feel good knowing you and New Leaf are supporting the education of our children. There are 3 New Leaf stores where your cards will work:

- 41st. Ave., Capitola
- Pacific Ave., Downtown Santa Cruz
- Fair Ave., on the Westside

There are 3 New Leaf locations where your card will NOT work:

- Felton
- Half Moon Bay
- Boulder Creek



This is how it works:

Purchase a New Leaf eCard and a percentage of that amount goes directly back to AFE:

- 4% on \$50
- 5% on \$100, \$250, and \$500
- Increments of \$100's or \$50's only.

I will place the order, deliver your card to the RC, and maintain the last 6 digits of the card number. Hang on to your card, it's refillable. When you use your card, select "gift card" as your method of payment.

Orders will be placed on the 15th of every month, payments must be in by the 10th. Checks or cash may be deposited in the New Leaf envelope at Dorothee's desk in the resource center. Please make checks payable to AFE PARENT CLUB.

Thank you very much for participating!

Victoria Harder [\[email\]](#)

Whole Foods Gift Cards

The Parent Club sells Whole Foods gift cards for \$100 each. The value on the card is \$100 so there is no additional cost to the buyer for supporting AFE. Use the card to pay for any of your purchases at any of their stores. Please keep the card and load more money onto it with a check or on-line transfer, up to \$400 at a time.

AFE gets 3% of the money our community members pay for gift cards and loading them. If you shop at Whole Foods, this is a great way that you can contribute to AFE. [Contact Ruthie.](#)

ScripNOW! Electronic Gift Cards

INSTRUCTIONS to sign up & shop the GLSC retailer fundraiser:

[Click here for a list of businesses](#) that offer electronic gift cards & the percentage of your purchase that will go to AFE.

How to:

Set up your Family Account so that you can get started with this program:

1. Go to www.ShopWithScrip.com and click 'Register', then click 'Join a Scrip Program'.
2. Enter our enrollment code (**7L9B8E8F45328**). By entering this code, your account will be associated with our non-profit organization so you can begin earning kickback percentage for AFE!
3. Fill in brief personal information (there is no financial information asked) and click 'I Accept.'
4. Choose two security challenge questions from the list and provide answers.
5. If you want to pay with a check to the AFE Parent Club then you are done with the enrollment process and you can start shopping (see instructions below). If you want to pay online for faster access to your electronic gift cards, sign up for "Presto Pay".

How to:

Shop for electronic gift cards "ScripNow":

1. [Click here for a list of businesses](#) that offer **ELECTRONIC** gift cards.
DO NOT ORDER PHYSICAL GIFT CARDS! Physical gift cards come with an additional fee to AFE. (If you want a physical gift card to Whole Foods, see above.) At some point in the future AFE may make a large order of physical cards from other businesses if we have a high enough interest to justify the cost. For now it is ONLY electronic gift cards "ScripNow" that you can order for yourself online. If you do want a physical gift card for Whole Foods, buy that directly from AFE, NOT online.
2. Open another tab and go to www.ShopWithScrip.com. Click on 'Shop' at the top of the page & the alphabet will appear across the top. Clicking on any letter will take you to the page with all the businesses that start with that letter. (There are hundreds & hundreds of retailers in this program but only about 150 of them offer electronic gift cards, so you want the list mentioned above handy when browsing!)
3. Scroll over the business you're interested in and click on the exclamation point to start your order for an electronic gift card from that business. (If the exclamation point is grey it means that business does not offer electronic gift cards - refer to the link of businesses that do offer them). Add the \$ amount

you want to buy from that business and click on 'Add to Cart'. Keep shopping and adding gift cards to your cart until you have all that you want for now.

4. When you're done shopping, go to your cart by clicking on it at the top of the screen. For Payment Options, if you don't have a Presto Pay account click 'Check' on the tab above the 'Order Summary' then click 'Submit Order'.

When I get your check I'll approve the order and an email will be sent to you with confirmation your electronic gift certificates are available.

THANK YOU ALL FOR HELPING TO SUPPORT
THE WONDERFUL PROGRAMS THAT WE LOVE AT AFE!

Newsletter submissions

Parents, staff, and students are encouraged to submit content for our newsletter. The submission deadline is 1 week before the first day of each month. We especially need content from parents about their children's activities. **Photos are always appreciated**—contact me to get the upload link. [Email Suki](#).

Copyright © 2017 Alternative Family Education, All rights reserved.

Want to change how you receive these emails? You can [update your preferences](#) or [unsubscribe from this list](#). If you are not a current AFE family, please [unsubscribe](#).

MailChimp